

SCHOOL YEAR 2025-2026

NEW TO RECEPTION INTAKE MEETING





WELCOME

- We're delighted to welcome your child to Reception at Bishop Martin. This is an exciting year filled with growth, discovery, and learning.



Class Teacher

Miss Rowat

This academic year, Miss Rowat has the pleasure of being your child's teacher.

WHAT TO EXPECT IN RECEPTION

- Final year of EYFS
- More structured learning than Nursery
- Mix of adult-led activities and child-initiated play
- Learning indoors and outdoors



School
Timetable



Mon	Tue	Wed	Thu	Fri	Sat	Sun

A DAY IN THE LIFE

- Morning Register & Welcome
- Maths Session (Maths – No Problem!)
- Snack Time – fruit, toast & milk
- Phonics (Read Write Inc.)
- English / Literacy
- Child-Initiated Play throughout
- Lunch in Dinner Hall - Play with KS1 peers
- Foundation Subjects
- Story time & End of the Day

THE EYFS CURRICULUM

Prime areas

- Prime Areas:
 - Communication and Language
 - Physical Development
 - Personal, Social & Emotional Development



A B C

THE EYFS CURRICULUM

Specific areas

- Literacy
- Mathematics
- Understanding the World
- Expressive Arts and Design

1
2
+ 1 6 +
5 x 8 3
2 5



PHYSICAL DEVELOPMENT

- Weekly PE sessions for coordination and balance
- Children wear PE kit on PE days (check school policy)

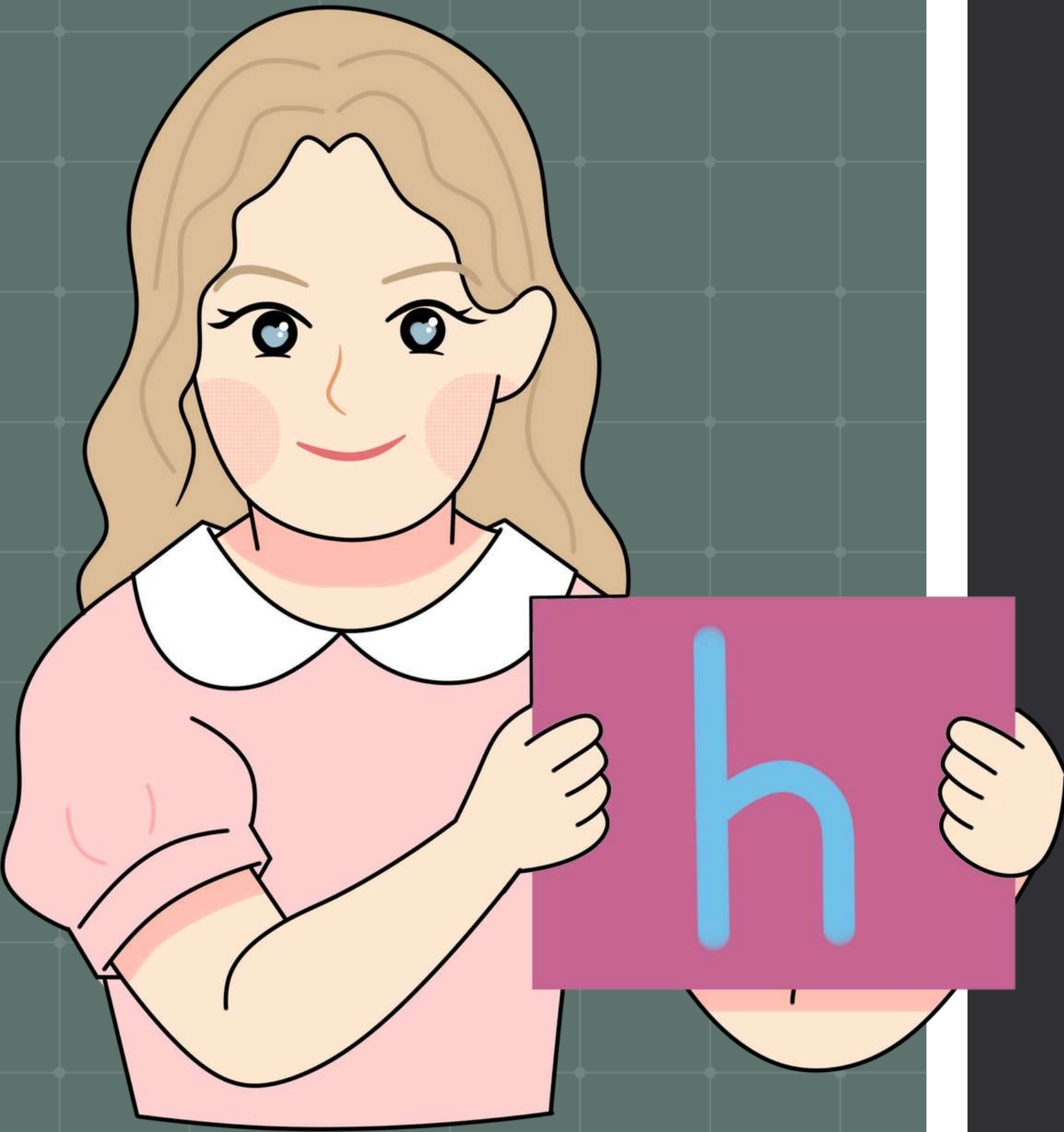




ASSESSMENT

- Continuous observation and assessment and use of the Seesaw app
- End-of-year assessment against Early Learning Goals (ELGs)
- Parents receive a report on progress

PHONICS – READ WRITE INC.



- Daily sessions to teach sounds and blending
- Support early reading and writing
- Books matched to phonics stage

MATHS – NO PROBLEM!

- Practical, hands-on approach
- Focus on number, shape, space, patterns, and basic calculations
- Encourages deep understanding



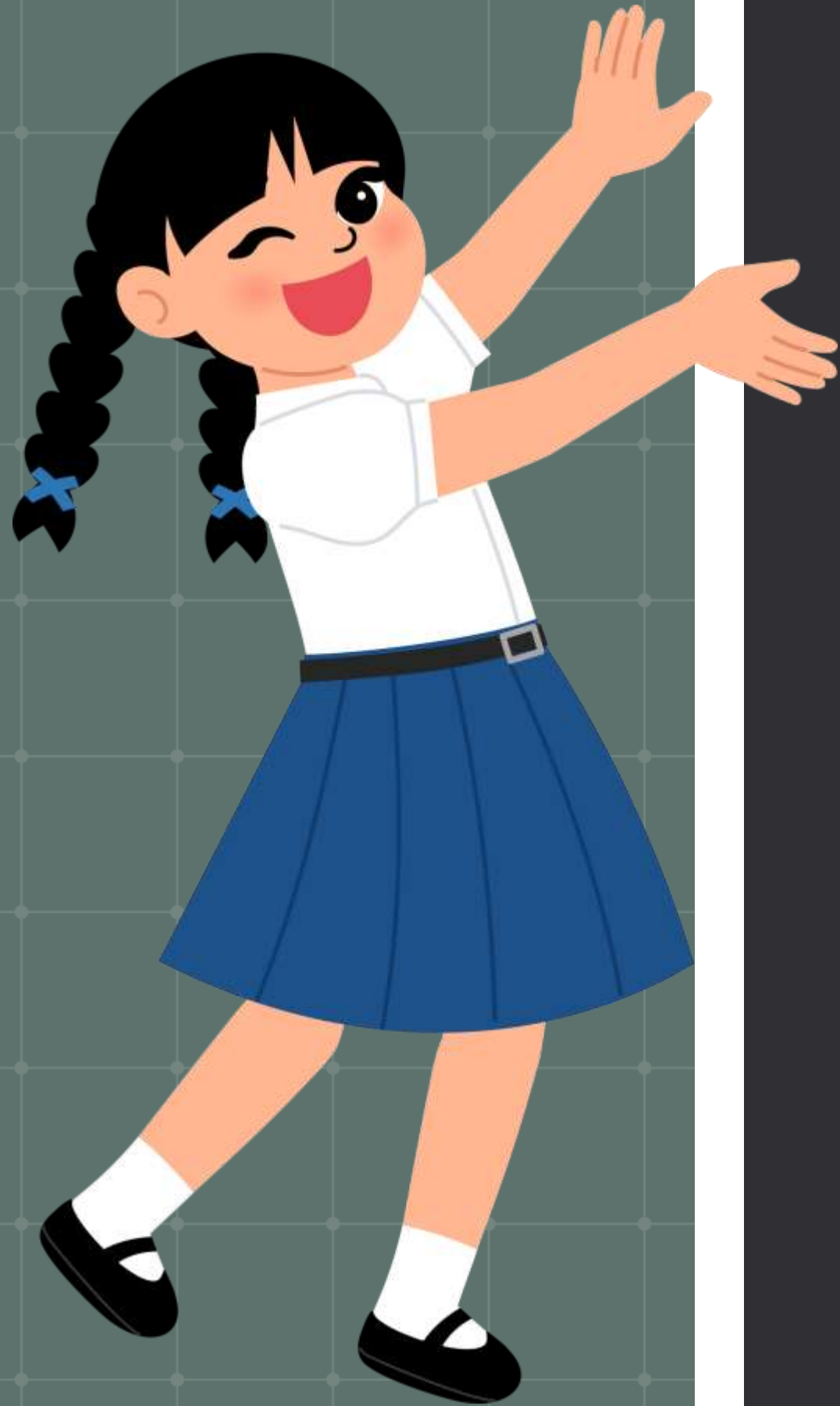


FOUNDATION SUBJECTS

- RE, Music, PE, Art and Design, and Understanding the World

- 
- Encourage exploration, creativity, and knowledge of the world

UNIFORM EXPECTATIONS



- Promotes belonging, equality, and pride.
- PE kit on PE days
- Please label all clothing (see school policy)



ADDITIONAL INFORMATION

- Children have daily access to outdoor areas which supports physical development and creativity and encourages independence and teamwork

- Daily snack: fruit, toast, milk
- Lunch is eaten in dinner hall
- They play with KS1 peers at lunch time

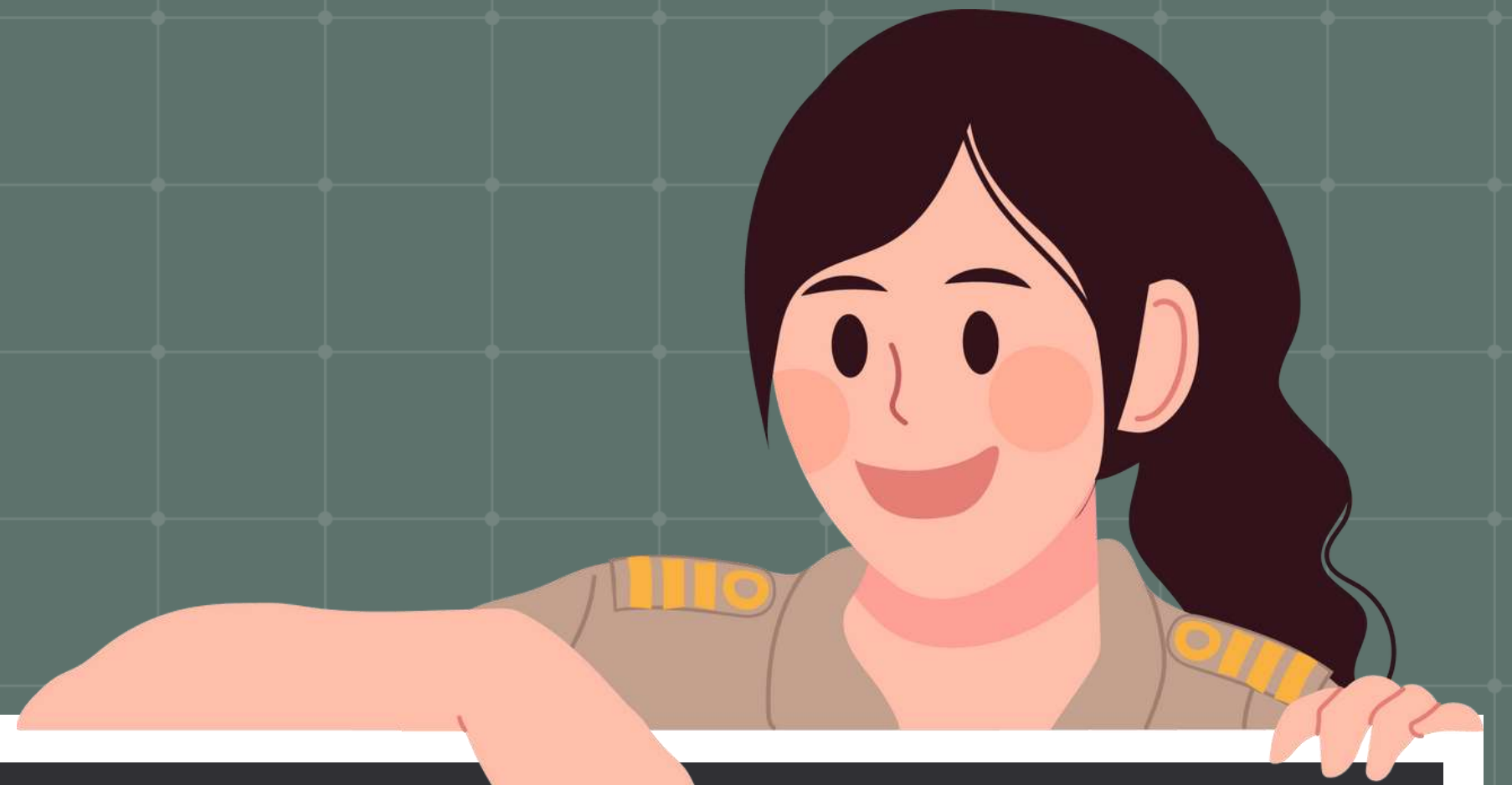


HOW YOU CAN HELP AT HOME



- Reading - Read daily, practise letter sounds, discuss books
- Maths - Count, spot numbers, talk about time and shapes
- Independence - Dressing, toileting, responsibility
- Talking - Conversations build vocabulary and confidence





WE'RE HERE TO SUPPORT YOU



We value communication and working together. Please ask questions and share successes. Let's make it a great year!

THANK YOU!

Your involvement in our child's education is greatly appreciated.

