

SCHOOL YEAR 2025-2026

NEW TO NURSERY INTAKE MEETING





WELCOME

- We're delighted to welcome your child to Nursery at Bishop Martin. This is an exciting year filled with growth, discovery, and learning.

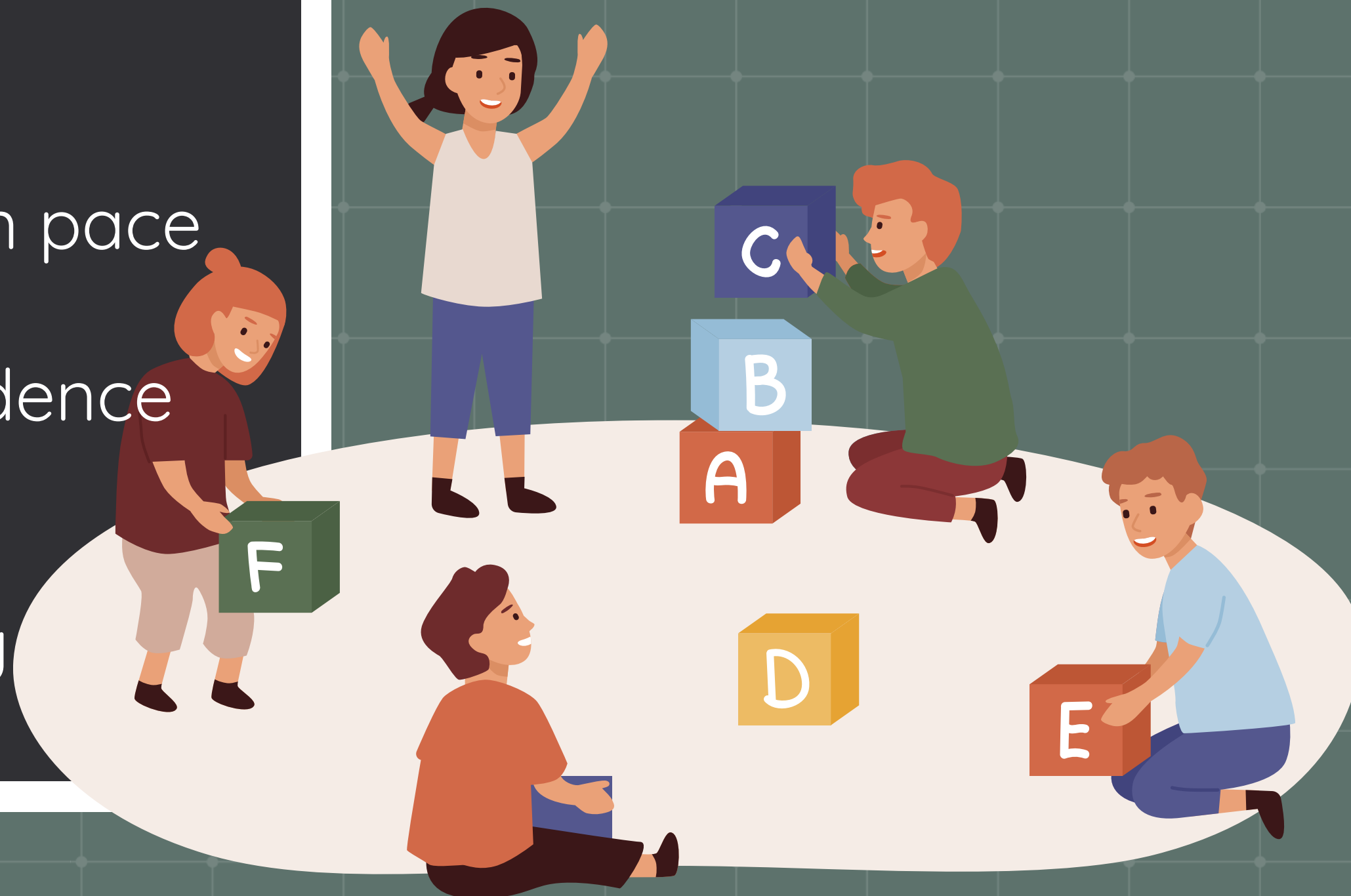


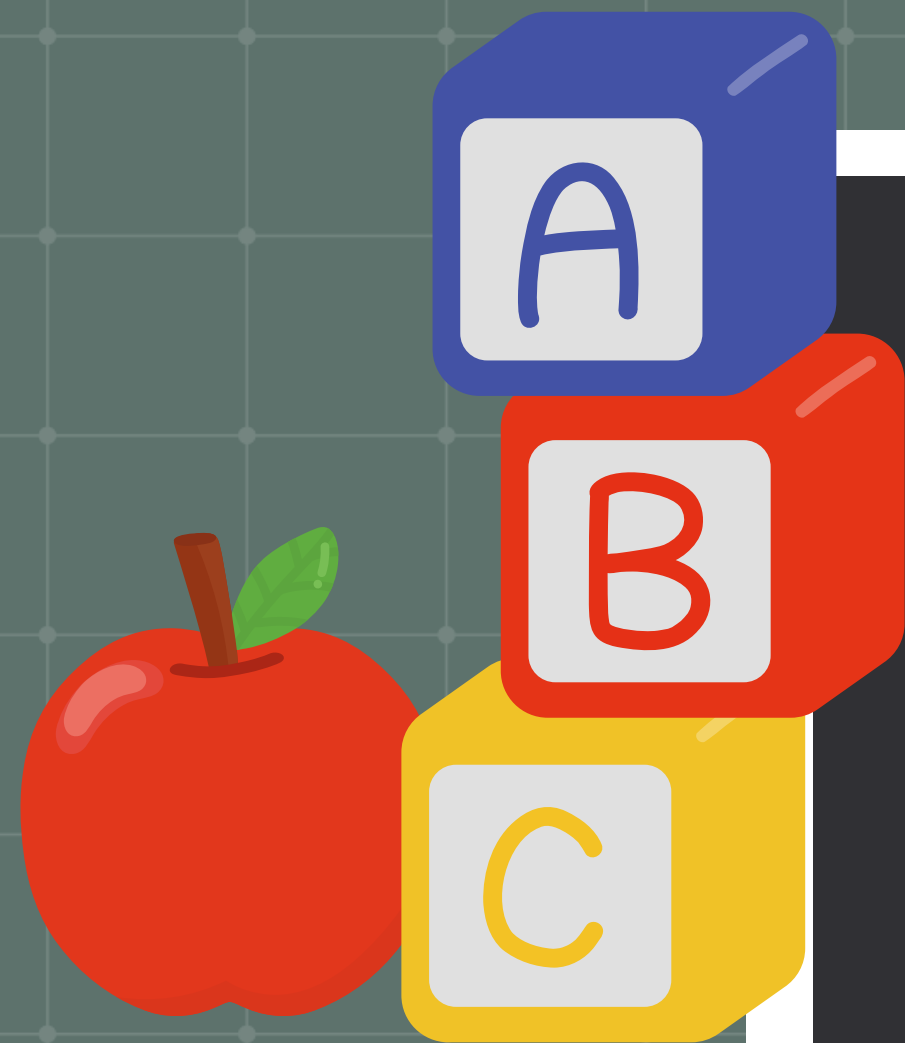
Nursery Staff

Mrs Henshall
Mrs O'Callaghan
&
Miss Bretherton

WHAT TO EXPECT IN NURSERY

- Learning through play is central to the day
- Children explore at their own pace
- Encouragement of independence and curiosity
- Safe, caring, and stimulating environment





A DAY IN THE LIFE

- Welcome & Register
- Adult led sessions, whole class and small group.
- Free-flow play and exploration
- Snack time – fruit and milk
- Story time and songs
- Outdoor play
- Lunch (if staying for full day)
- Group time and key person activities



THE EYFS CURRICULUM

Prime areas

- Prime Areas:
 - Communication and Language
 - Physical Development
 - Personal, Social & Emotional Development



A B C

THE EYFS CURRICULUM

Specific areas

- Literacy
- Mathematics
- Understanding the World
- Expressive Arts and Design

1 2 + 1 6 + 5 x 8 3 2 5



LEARNING THROUGH PLAY

- Children learn best when they are playing and exploring.
- Activities are carefully planned to support development in all EYFS areas.
- Indoor and outdoor play are both key parts of the day.

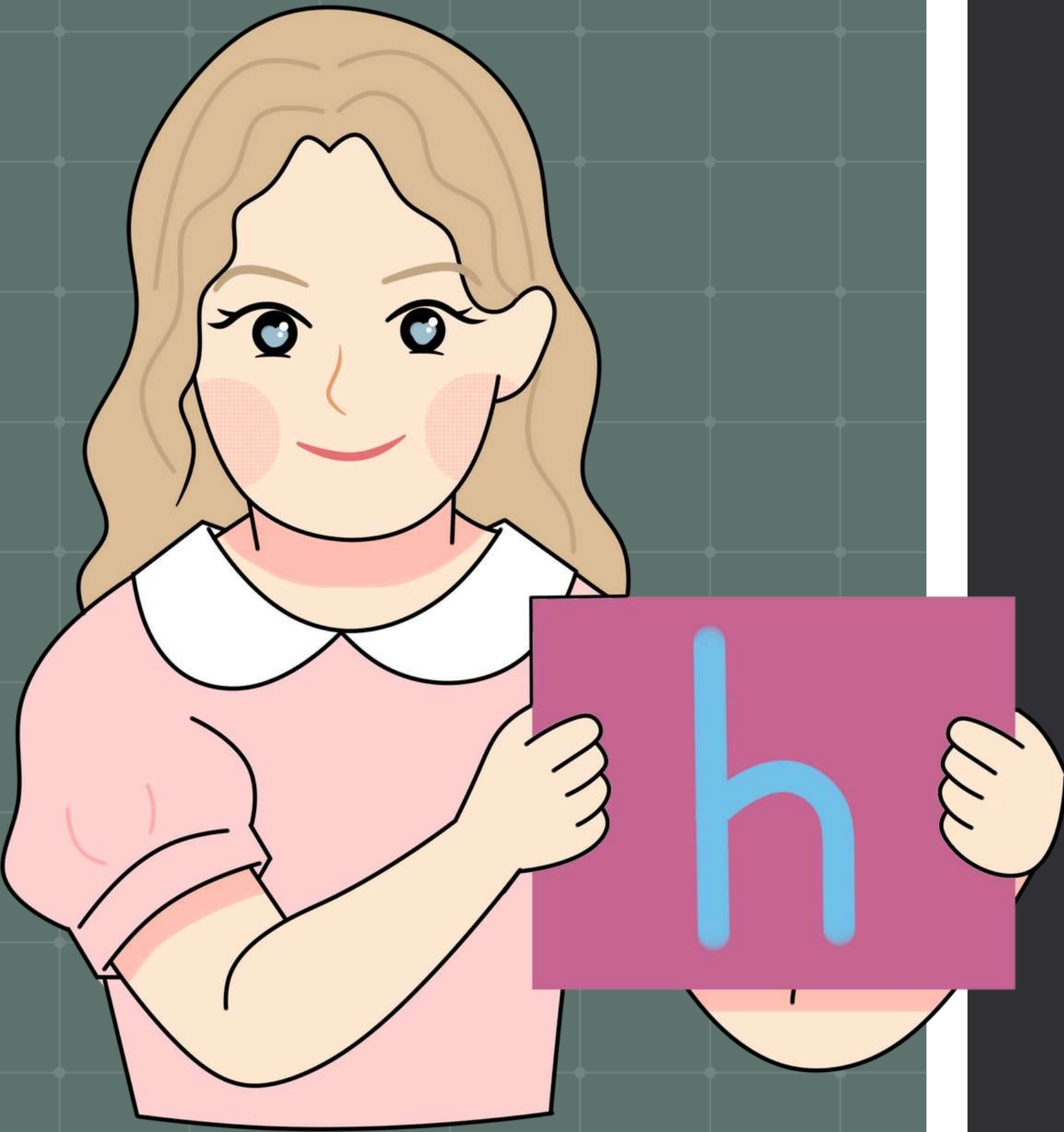


An illustration of a clipboard with a purple border and a brown clip at the top. The clipboard contains a white sheet of paper with a checklist. The checklist has three items, each with a colored square (red, green, blue) and a yellow checkmark. To the right of the clipboard is a brown pencil with a grey eraser and a sharp lead tip.

ASSESSMENT

- Continuous observation and assessment and use of the Seesaw app
- Parents evening in the Autumn and Spring term
 - Parents receive a report on progress

PHONICS – READ WRITE INC.



- Daily sessions to teach sounds and blending
- Support early reading and writing
- Books matched to phonics stage

UNIFORM EXPECTATIONS



- Promotes belonging, equality, and pride.
- Not essential for Nursery
- Please label all clothing (see school policy)





OUTDOOR LEARNING



- Outdoor play is part of every day, whatever the weather!
- It supports physical skills, confidence, creativity, and teamwork.

***Please ensure your child has suitable clothing

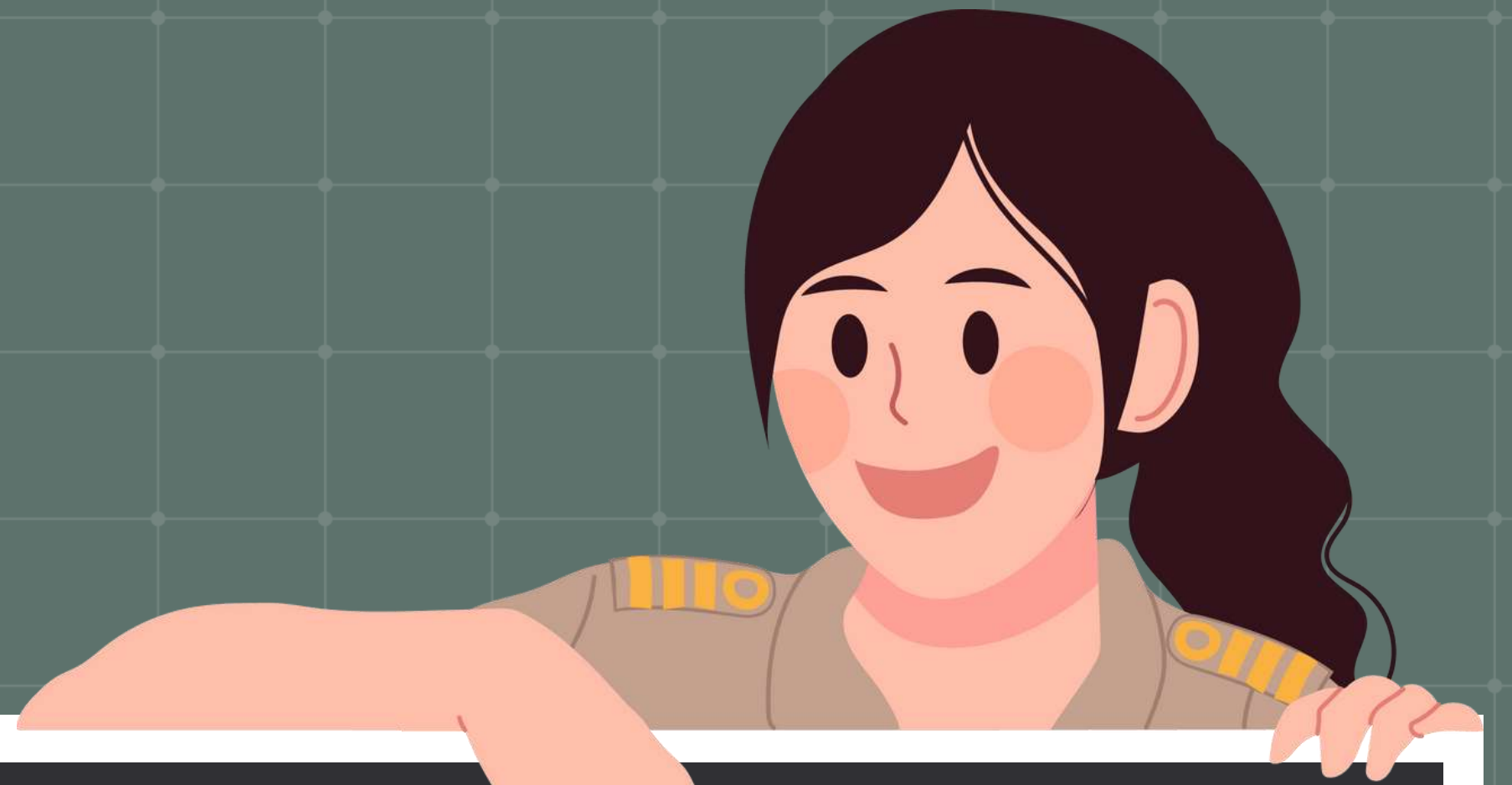


HOW YOU CAN HELP AT HOME



- Talk with your child regularly
- Read stories and nursery rhymes
- Encourage independence – dressing, toileting, tidying
- Play together and explore your environment
- Share any concerns or achievements with us





WE'RE HERE TO SUPPORT YOU



We value communication and working together. Please ask questions and share successes. Let's make it a great year!

THANK YOU!

Your involvement in our child's education is greatly appreciated.

